



Millquarter

Primary School



Live - Laugh - Learn - Love



Fáilte / Welcome

Thank you for taking the opportunity to find out about our school. I hope this prospectus helps you gain an insight into the many aspects of school life in Millquarter. Our Christian values remain core to everything we do. Indeed, we believe it is our distinctive character, atmosphere and expectations that enable us to promote the all round development of our children.

I am extremely proud of our children, staff and our school. We are committed to the care and welfare of our children and always seek to respond sensitively and appropriately to the concerns children or parents may have.

We have a strong tradition of high standards of pupil attainment and this is reflected in the expectations held by staff for pupils. It is also seen in the responses of our pupils to the curricular and extra-curricular opportunities provided.

We value our children for their best efforts and give recognition for effort, attainment and achievement. I am privileged to lead a highly dedicated and professional team who are

committed to providing the best opportunities for our children. The staff, supported by governors, work hard to deliver a rich and challenging curriculum; pass on our 'fait' prepare children for future education and help them acquire the skills and enthusiasm needed to pursue life-long learning.

I look forward to welcoming you to our school and to a happy and successful partnership with you as your child embarks on the exciting journey through primary school.

Mrs MC McNamee
Principal



Mrs McNamee
Principal



Mrs Storey
Acting Principal

"The children are friendly, courteous and their behaviour is exemplary; they are well motivated and demonstrate a very positive attitude to their learning."

ETI

The Aims and Ethos of our school

◆ Inclusive

The Christian faith lies at the heart of our ethos in Millquarter Primary School and underpins the way we work and endeavour to live together as a school community. We are a welcoming and inclusive school where pupils are nurtured in a positive, caring and safe environment.

◆ Child-Centred

Through an emphasis on child-centred education, it is our aim that every child achieves their full potential. Pupils are also encouraged to become self-confident, independent learners. We aim to meet the needs and aspirations of our pupils through high quality teaching & learning.

◆ Community

We actively seek to promote close cooperation between the school, families and the wider community including other pre-schools, primary schools and post-primary schools.

◆ Respect

Millquarter is proud of its tradition of mutual respect and inclusion which it promotes through a caring pastoral provision and by welcoming children of other faiths and denominations.

◆ Support

We understand that every child is precious - an individual blessed with their own unique set of gifts and talents. At Millquarter we work hard to support each child as they discover where their strengths lie and work hard to ensure every child is given an opportunity to succeed and develop.

◆ Life-Long

We believe education today is about learning to live for a lifetime of change. Our environment, technology, economy and society are forever changing and the values and skills we can give our young people will be key to helping them realise a happy and fulfilling life.

◆ Communication

Throughout our school we have committed and enthusiastic staff and governors who work in partnership with very supportive parents, all of whom put the best interest of our children first. As a result we enjoy a positive, warm and friendly ethos in Millquarter.



Live - Laugh - Learn - Love

Millquarter Primary School

Leading the Way

Digital Leaders

Millquarter P.S was one of the first schools in Northern Ireland to be recognised as a Digital School of Distinction, and received the award from the Education Minister in March 2016. The Digital Leaders, together with all staff and pupils from P1-7, work hard to ensure that we continue to uphold the high levels of skills and competencies in ICT.

Junior Road Safety Officers

Our Key Stage One and Two pupils are invited to apply for the role of Junior Road Safety Officer at the beginning of every school year. Following a recruitment and selection process the successful candidates are charged with the responsibility of raising road safety awareness and promoting road safety issues to everyone in Millquarter and the wider community. The Junior Road Safety Officers get involved in:-

- ⇒ Talking at assemblies and to classes on road safety topics;
- ⇒ Running competitions in school;
- ⇒ Using and publicising the www.streetwiseguys.co.uk website and
- ⇒ Getting involved in organising safe and active travel activities.



School Council

We have a thriving and active School Council in Millquarter Primary. It is an important part of our school and has great influence on school life. At the beginning of each school year elections are held to select new council representatives for each class. The School Council meets regularly each term with a teacher from the Senior Leadership Team. Suggestions made during class council meetings are put forward and discussed by the School Council. Achievable projects that pupils think will enhance our school are agreed and worked upon. There is a lot of discussion and problem solving involved!

Eco-Committee

Pupils from each year group (P4-P7) are elected to represent their class on the Eco-Committee. These pupils work very hard to make Millquarter a more environmentally friendly school. The committee meet together regularly throughout the year to plan activities and ideas designed to make the pupils and staff of Millquarter more aware of environmental issues.



Leading the Way

Anti-Bullying Ambassadors

Millquarter's Anti-Bullying Ambassadors are children who put themselves forward as role models for friendly and safe behaviour, in and around school. They believe that bullying behaviour is not acceptable and should not be part of everyday life in school.

As ambassadors, the children are committed to creating and maintaining an environment where we all feel happy, supported and safe.

The Ambassadors provide an additional support network for their peers, standing up to bullying and supporting others to, 'Choose Respect.'

Our Anti-Bullying Ambassadors meet regularly with the Designated Teacher, Mrs Storey, to plan and carry out surveys, take part in assemblies and organise activities that shape attitudes and promote positive behaviour.

Well-Being Champions

Millquarter's Well-Being Champions play a key role in fostering a supportive, inclusive environment that prioritises students' mental, emotional and physical-wellbeing. These champions, often selected by staff, promote the 'Take 5 Steps to Wellbeing' Framework, which encourages children to build healthy habits in a simple and accessible way. The 'Take 5 Steps to Wellbeing' are: Connect, Be Active, Take Notice, Keep Learning and Give.

Wellbeing Champions help integrate these steps into daily school life.



The Curriculum

The Northern Ireland Curriculum

In Millquarter we deliver the Northern Ireland Curriculum through a topic based approach. The curriculum provides the necessary breadth and balance to ensure the development of skills, knowledge, understanding and values required for adult life. In Millquarter each child has the opportunity to experience success and to achieve as high a standard as possible.

Stages of the Primary Curriculum

The primary phase consists of three stages. These are:-

- The Foundation Stage (Primary 1 and 2)
- Key Stage 1 (Primary 3 and 4)
- Key Stage 2 (Primary 5, 6 and 7)

Structure of the Primary Curriculum

The Northern Ireland Curriculum framework includes 6 areas and Religious Education in a Catholic School. These are: *Language and Literacy, Mathematics and Numeracy, The Arts, The World Around Us, Physical Education; and Personal Development and Mutual Understanding.*

The curriculum also makes provision for the three cross-curricular skills of:

Communication

Using Mathematics

Using ICT



Homework

In Millquarter we place great value on homework. We see it as an opportunity:-

- ⇒ For children to practise concepts and skills that have been introduced during the teaching day;
- ⇒ For children to develop independent learning skills,
- ⇒ To give parents/carers a window on the work carried out by the children in school.

Homework is regularly set according to age and ability. Each year group will have a mixture of written and practical tasks covering all curriculum areas, particularly literacy and numeracy. As pupils progress through the school the amount of homework set and the time spent doing homework will increase.



School Admissions



Starting School

Starting school is a very important time for you, your child and the school. We all need to work together to make the transition smooth and rewarding.

In the term prior to their entry, pupils and parents are invited into Millquarter Primary for visits. This helps them become familiar with the surroundings and routines of the school.

We have a reduced day for Primary One pupils at the start of the year when they stay in school until 12 noon. Once they have settled in, this is then extended to 1.40pm for the remainder of the year.

Primary 1 and 2 children are invited to stay for Late Class from the middle of Term One onwards. Late Class allows younger pupils to stay an extra hour and the children are collected at 2.40pm or they travel home with their Bus Buddy.

Primary One Admissions Policy

If the number of applications exceeds our admissions number then the following criteria will be applied in the order listed below:

Children of compulsory school age (including those children who deferred commencing Primary 1 in September 2024. Both 'deferred September 2024' and 'compulsory school age children September 2025' will be considered equally).

Children resident in Northern Ireland at the time of their proposed admission to the school before those who are not so resident.

1. Children who have siblings currently enrolled at the school
2. Children whose permanent home address is in the parish of Duneane or Ballyscullion, Co. Antrim
3. Children for whom Millquarter is the nearest maintained primary school as measured by public road, using google maps.
4. In the event of a tie, chronological age, beginning with the eldest will be applied.

The Board of Governors reserves the right to require such supplementary evidence as it may determine to support or verify information on any application form.



Enrolment

The Department of Education calculates the total number of children each school can accommodate (Enrolment Number) and the number of children who can be admitted to Primary One (Admissions Number).



The numbers for Millquarter Primary School are:

Enrolment Number: 145

Admissions Number: 21

	<i>Total Applications</i>	<i>Total Admissions</i>
2022/2023	26	25
2023/2024	11	10
2024/2025	22	22

Thursday 5 December 2024	Admissions criteria for Primary schools published on the EA website.
Friday 10 January 2025 – at 12 noon	EA Connect opens for online applications for Primary 1.
Friday 24 January 2025 – at 12 noon	EA Connect closes for online applications for Primary 1.
Wednesday 29 January 2025 – by 4pm	Deadline for submitting verification/ supporting documents via EA Connect. Final date for late paper applications.
Wednesday 9 April 2025	Parents/carers will receive application outcomes via email (where one is held) or by letter.



The School Day



Starting School

Starting school is a very important time for you, your child and the school. We all need to work together to make the transition smooth and rewarding.

In the term prior to their entry, pupils and parents are invited into Millquarter Primary for visits. This helps them become familiar with the surroundings and routines of the school.

We have a reduced day for Primary One pupils at the start of the year when they stay in school until 12 noon. Once they have settled in, this is then extended to 1.40pm for the remainder of the year.

Primary 1 and 2 children are invited to stay for Late Class from the middle of Term One onwards. Late Class allows younger pupils to stay an extra hour and the children are collected at 2.40pm or they travel home with their Bus Buddy.

Drop Off

8.30 - 8.40am onwards from which time they will be supervised.

School Starts

8.40am

Break

10.15 - 10.30am

Lunch

12.15 - 1.00pm

School Finishes: P1 & P2

1.40pm

School Finishes: P3 to P7

2.40pm

If your child is absent from school, a note or telephone call of explanation should be sent in to the class teacher.



School Meals

Break

We promote a healthy eating policy at break-time which includes the following: Fruit: apples, oranges, bananas, grapes etc. Vegetables: carrots, celery, cucumber etc. Drinks: milk, water.

Milk/Water

Small milk cartons are available in school and is ordered and paid for a month in advance.

Research indicates that drinking water is not only healthy but improves concentration levels. Children are encouraged to bring a bottle of water into class each day.

Lunch

At lunchtime children can either have a school dinner or bring their own packed lunch to eat in their classroom. School dinners are served in the dining hall and the current price is £2.60. A menu is available every four weeks and is posted on Seesaw and our school website.

Some children may be entitled to free school meals. Application forms are available from the school office or from the Education Authority. It is vital that any child entitled to receive Free School Meals is registered (even if they do not wish to avail of the dinner) as this number of FSM has serious implications for our budget allocation.

We are a Cashless School

Millquarter uses a School Money App which is an easy, safe and secure way to pay for your child's trips, dinner and any other expenses online via your debit or credit card.



School Uniform

*Our jumper and tie are available from
Select Kidz, Magherafelt.*

Our school uniform helps to create a sense of team spirit and loyalty to the school.

Our uniform should be worn at all times unless otherwise directed and consists of:

Boys

- ◇ Grey trousers
- ◇ White shirt
- ◇ Grey school jumper
- ◇ School tie
- ◇ (elasticated/standard)
- ◇ Black/grey socks



Girls

- ◇ Grey pinafore or skirt
- ◇ White shirt
- ◇ Grey school jumper
- ◇ School tie
- ◇ (elasticated/standard)
- ◇ Grey tights/ white sock





Summer Uniform

A summer uniform is also acceptable in the warmer months. This consists of a white polo shirt and long grey shorts for boys and a red and white checked dress for girls.



Please ensure that all items of clothing are marked clearly with your child's name.

Parents should discourage children from wearing jewellery, especially earrings, necklaces and bracelets for health and safety reasons



P.E Uniform

Red plain polo shirt

Black leggings/tracksuit bottoms.

A base layer can be worn under the red polo shirt in colder weather together with a coat.

Black cropped leggings or cropped tracksuit bottoms can be worn in warmer weather

Please note shorts are not part of P.E. uniform.



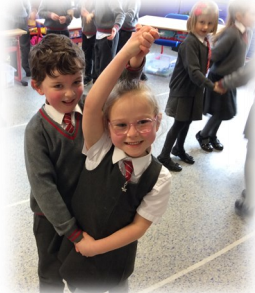
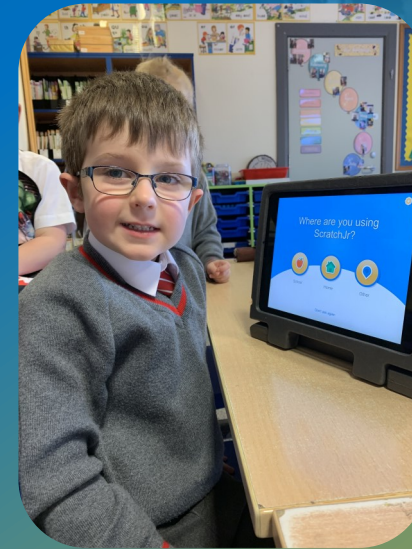
Friends of Millquarter

The 'Friends of Millquarter' is a group of parents and teachers from Millquarter Primary School who give up some of their time throughout the school year to help organise events, fundraise and secure additional equipment for all the children (equipment which could not otherwise be provided from within the normal school budget).

The 'Friends of Millquarter' aim to advance the education of all pupils in our school by:-

- ⇒ Developing effective relationships between the staff, parents and others connected with our school;
- ⇒ Engaging in activities and providing facilities and/or equipment which supports the school.

The 'Friends of Millquarter' are always seeking parent volunteers and new ideas for events. If you would like to make a difference and you have some time to spare, please contact one of the committee members or leave your details in the school office.



Assessment

Assessment of learning is an integral part of school work. The main purposes of assessment are to:

1. Gather information about each child in order to enable teachers to plan effectively for each child's learning needs.
2. Help teachers monitor children's progress as they move through the primary school.

Assessment methods from P1 to P7 are suited to the ages of the pupils concerned and the subject area in question. Informal assessments are based on class tests and class work. Written records and samples of work are retained by the class teacher and passed on to successive teachers with an end of year progress report.

September	P1-7 Parent Teacher Curricular Information Personal Learning Plans Agreed
Oct/Nov	P1-7 Progress Report at Parent Teacher Interview
Dec	Personal Learning Plans Reviewed
June	Summative Annual Report Personal Learning Plans Reviewed

Parent Reports

An important part of the assessment process is to talk with parents about their child. A curriculum information afternoon is held at the beginning of each school year. It provides parents with the opportunity to meet their child's new teacher and find out about the work they will undertake in their new year group.

Parents are invited to discuss their children's progress in a formal Parent-Teacher interview usually held during the first term. Parents also receive a written report at the end of the school year about their child's progress in all curriculum areas.

We encourage any parents with concerns or wishing to discuss their child's progress at any other time to contact the school office to arrange a meeting with the class teacher.



The children achieve high standards in information and communication technology (ICT). They have well-planned opportunities to use an increasing range of digital media to support and enhance their learning in all areas of the curriculum.'

ETI, January 2015



Who we are...

Pastoral Care

Our Christian ethos permeates every aspect of school life in Millquarter. We strive to ensure that all members of our school community feel valued and respected. We endeavour to create a happy, secure and well organised environment in which our children can grow personally, socially, spiritually and intellectually. Our pastoral care policy reflects the values, attitudes, beliefs and practices of our Catholic faith.

Religious Education

We follow the 'Grow in Love' from Primary One to Primary Seven. The children are prepared for First Confession, First Holy Communion and the Sacrament of Confirmation. The parents of Primary 3, Primary 4 and Primary 7 children preparing for the Sacraments, are invited to a series of meetings, delivered in partnership with our local parish schools and the Priests of our Parish.

When R.E. is being taught, children of other faiths may go home early for lunch or be occupied with some other task as agreed between the Principal and their parent/s.

Positive Behaviour

We aim to help children behave responsibly, co-operatively and with concern for others so that they can work together productively. The children are encouraged to think of the consequences of their actions. Sanctions are used when necessary but we focus on positive reinforcement and rewards. There are regular assemblies, annual prize giving ceremonies and continuous recognition of effort and achievement.



Child Protection

In recent times we have become all too aware of the importance of protecting the children in our care. All members of staff have undergone training in this area and procedures have been put in place for dealing with concerns or suspicions regarding child welfare in school. The Designated Teacher, Deputy Designated Teacher, Principal and the Governor responsible for child protection form the Safeguarding Team for Millquarter. Collectively, they are responsible for updating safeguarding policies and procedures as well as training staff.

A copy of our Child Protection Policy is available on our school website.

If your child has a problem at school

From time to time in the children's lives, events might arise that are upsetting for them. If you are able to share information about your child's personal life with us it can be extremely useful in helping us to offer understanding and support. This will always be dealt with in the strictest confidence.

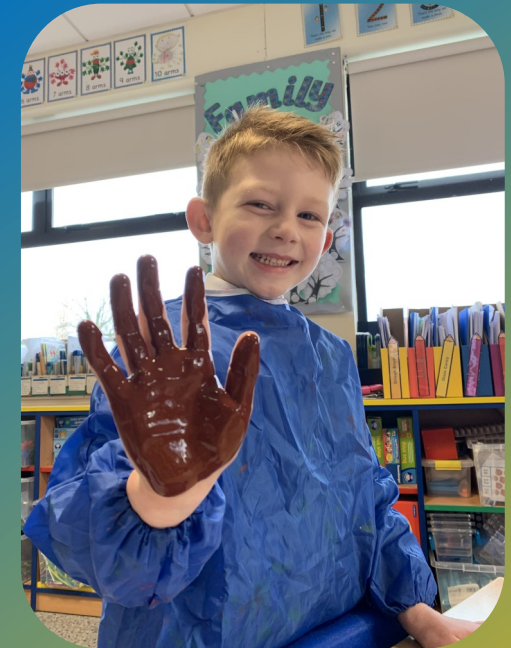
First Aid

If a child sustains an injury which does not require professional medical attention, parents will be notified about the incident. However, if a child suffers a injury which does require professional medical attention, parents will be contacted immediately (if possible).

Complaints and Praise

We welcome feedback from parents and others in the school community and take steps to improve where necessary. It is lovely to receive compliments and we always pass on notes of appreciation to those who are praised.

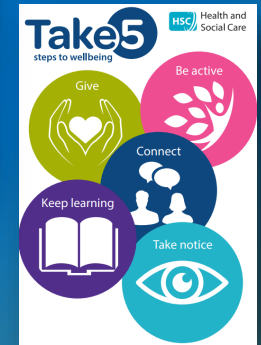
The majority of problems are dealt with informally and speedily to the satisfaction of all concerned. As required by law, however, we do have a formal complaints procedure and a copy of this is available from the school office.



Well-Being

We are a Take 5 School

Most of us know when we are mentally and physically well, but sometimes we need a little extra support to keep well. There are five simple steps that we follow in Millquarter to help maintain and improve wellbeing - Be Active, Connect, Give, Keep Learning and Take Notice.



Being Well Doing Well

The Being Well Doing Well (BWDW) programme is part of The Children & Young People's Emotional Health & Wellbeing in Education Framework. The programme aims to support schools to develop a Whole School Approach to Emotional Health and Wellbeing by resourcing them with; An Emotional Health & Wellbeing Framework; A package of support and Emotional Health and Wellbeing outcomes which will reduce pupils barriers to learning and enhance their readiness to learn.

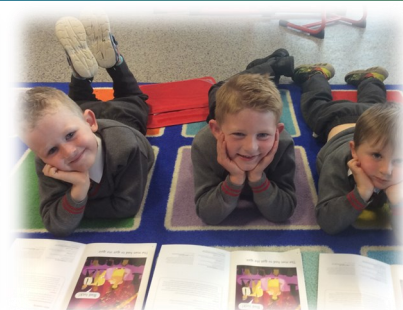
Lego Therapy

By using a commonly adored tool like LEGO it capitalises on its existing motivation and supports self-esteem by allowing the participants to demonstrate their skills in a social situation. It also sets up a positive opportunity for guided social problem-solving to help develop social skills that can then be used in other situations.



Special Education Needs

Millquarter recognises that some pupils will be gifted or talented. Any child identified with an exceptional ability will be nurtured and supported appropriately. The school identifies children who require additional teaching to meet their needs, organises and carries out diagnostic tests, provides individual and small group tuition, works with outside agencies to meet the need as appropriate and maintains regular consultation with parents. Personal Learning Plans are discussed and agreed at the beginning of each school year and reviewed with parents in December and June. Annual Reviews are also held during this time.



Sensory Room/Walk

Calming Corners

Each class contains a calming corner; a small, designated space located within the classroom. The purpose of a calming corner is to help support self-regulation while keeping students in the classroom if they need a break from instruction time or a group activity.

Sensory Room/Walk

Our Sensory room uses sensory equipment to create a controlled sensory-focused environment, away from the classroom. It also provides these additional benefits:

- A safe space with tools students can use to self regulate and manage anger, over-stimulation and stress.
- A controlled space to assess the type of environment a student is most comfortable in and the sensory activities a child is most responsive to.
- A comfortable space for students to relax in to help them interact with others.
- A safe crisis and de-escalation area.



Scoil Spreagtha

'We are a Scoil Spreagtha' School. Scoil Spreagtha is **an accredited scheme to recognise and celebrate efforts made by English-medium schools to encourage the use of Irish in the school environment.**

'Scoil Spreagtha' in its design aims to inspire schools to showcase and expand their efforts to promote the use of Irish in the school setting.



Shared Education

Shared education is defined as schools from different sectors working in partnership to provide opportunities for pupils, staff & the community to engage in collaborative and meaningful learning experiences. For pupils this means participating in shared classes which have been jointly planned, delivered and evaluated by teachers from across our partner schools Croggan P.S.St Brigid's Tirkane and Dunclug P.S. For parents it means having the chance to take part in shared events within partner schools and for the wider community it offers an opportunity for groups and individuals to engage with local schools in a very different way to that previously experienced.

Forest School



Millquarter is a Forest School who embraces outdoor learning where possible and have been accredited with Level 3 Forest School status The Northern Ireland Forest School Association has been developing and delivering outdoor learning programmes for schools across Northern Ireland since 2008. The benefits of Forest Schools for children and society are well documented.

- ⇒ Increased confidence and independence of the child.
- ⇒ Development of their language skills by providing a real context for language.
- ⇒ Ability to take risks and to become more open to new experiences.
- ⇒ The forest school program evolves from the needs of the child and includes the child's interests.
- ⇒ Provides the practitioner with an alternative view of the child and further insights into a child's development.
- ⇒ Beneficial to a child's all-round development, particularly in the areas of personal, social and emotional, language and communication.
- ⇒ Provides opportunities for the children to take risks, problem solve and use thinking skills.
- ⇒ Complements learning in the classroom and can be transferred.



Our Awards



Millquarter P.S

Millquarter Primary School
139 Crosskeys Rd
Toomebridge
Antrim
BT41 3PY

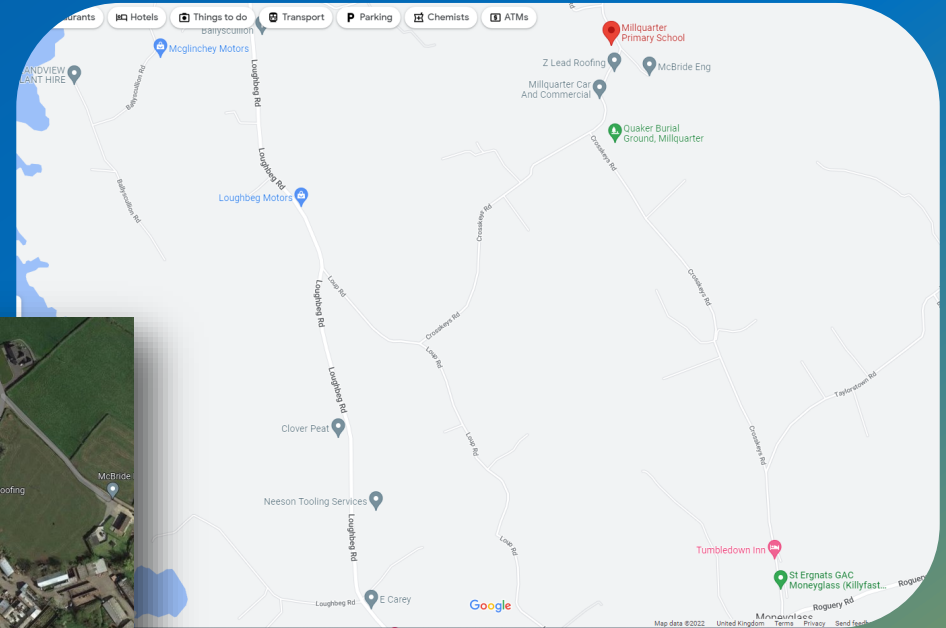
Phone: 028 7965 0130

Email: info@millquarterps.antrim.ni.sch.uk

Principal: Mrs MC McNamee

Acting Principal: Mrs Dympna Storey

Website: www.millquarterps.com



We would invite you to visit our school to experience our welcoming ethos and stimulating learning environment for yourself.

Live - Laugh



Learn - Love